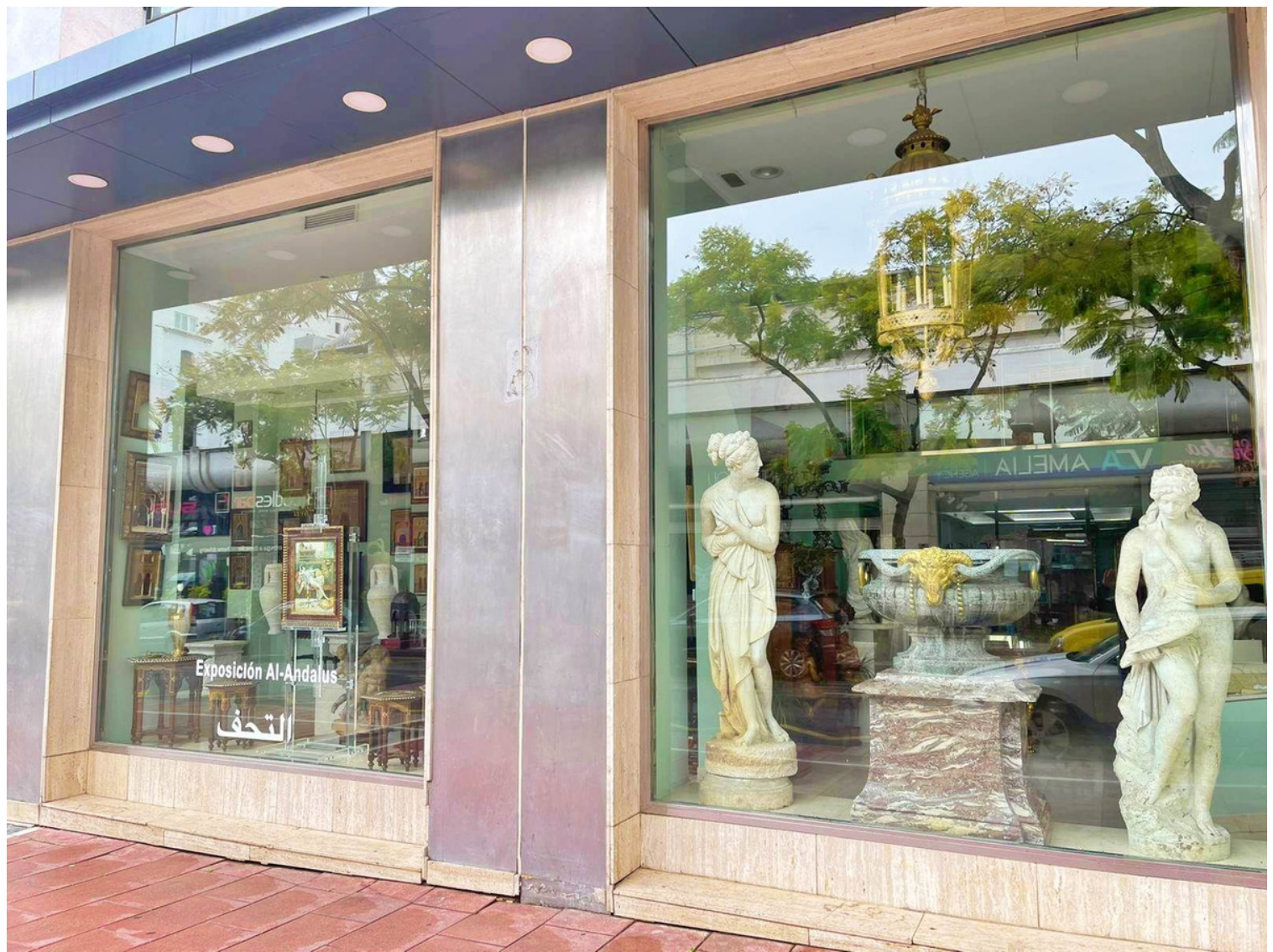


PUERTO BANÚS



■■■■■■■■

■■■■■■■■

■■■■■■■■ m²

< ---

5

436

■■■■■■■■■■■■■■■■■■■■ IN PUERTO BANÚS

Freehold Commercial Premises – Prime Puerto Banús Location An outstanding investment opportunity: five ground-floor commercial shops in the vibrant heart of Puerto Banús. This sought-after area ensures excellent visibility and foot traffic, making it ideal for a variety of businesses. Property Highlights: Freehold ownership Total built area: 436 m² Five individual shops: 65 m² 40 m² 52 m² 45 m² 82 m² Prime ground-floor location in a high-demand commercial zone Perfect for investors or entrepreneurs looking to establish a presence in one of Marbella's most prestigious areas. Contact us for more details or to arrange a viewing.

community

garbage

ibi

price

1 990 000 €

